



Double Wine Bag

designed by Hashi Meltzer

MATERIALS

- ~ 26" x 19" (66cm x 48cm) fabric for outer layer
(suggest home dec weight)
- ~ 26" x 19" (66cm x 48cm) fabric for lining
(suggest something smooth/slippy, to facilitate the insertion of the wine bottles)
- ~ 2 dowels, each $\frac{7}{16}$ "/11mm diameter x 12"/30cm long
- ~ Thread to match fabric



Print pattern at 141%, tiling as necessary. Make sure that finished dimensions match the measurements written. Seam allowance of 0.5"/12mm included.

1. Use correctly sized pattern to cut two pieces from outer fabric, and two from lining fabric. With tailor's chalk or a fade-away pen, transfer the dashed line from the pattern onto the right side of one of the outer fabric pieces.



2. With right sides together, sew the lining pieces together along the two long sides and the bottom, using 0.5"/12mm seam allowance. Seam should begin and end in line with the cut edge of the tabs at the top.



3. Clip bottom corners and press seams open. Repeat for the outer fabric.



3. On outer piece, line up the side and bottom seams of one bottom corner so that it forms a point; press flat and pin through seams to hold in place. With tailor's chalk or a fade-away pen, mark a line 1.25"/32mm from corner, perpendicular to the seam. Stitch along this line. Repeat for other corner, and for both corners of the lining.



4. Turn the lining right side out, and insert into the outer piece, so that right sides are together and all the raw edges line up evenly. Pin and stitch all around using a 0.5"/12mm seam allowance, leaving a 3"/75mm opening for turning.



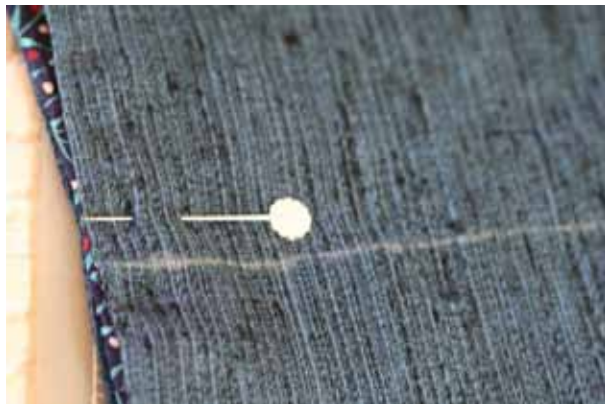
5. Turn bag right side out. Use a point turner (the end of a paintbrush is effective) to poke the four tabs out. Press well.



6. Slipstitch opening closed.



7. With side seams lined up, pin the bag together through all layers alongside the transferred line down the middle of the outer piece. Stitch along this line, backstitching at both ends to secure.



8. Fold one of the tabs in half to the outside of the bag. Stitch through all layers in the shape of a cross within a rectangle, as shown, forming a loop. Check that there is room for the dowel to slide snugly through the loop. Repeat for the three remaining tabs. Insert the dowels.



9. Add wine bottles! You're done!